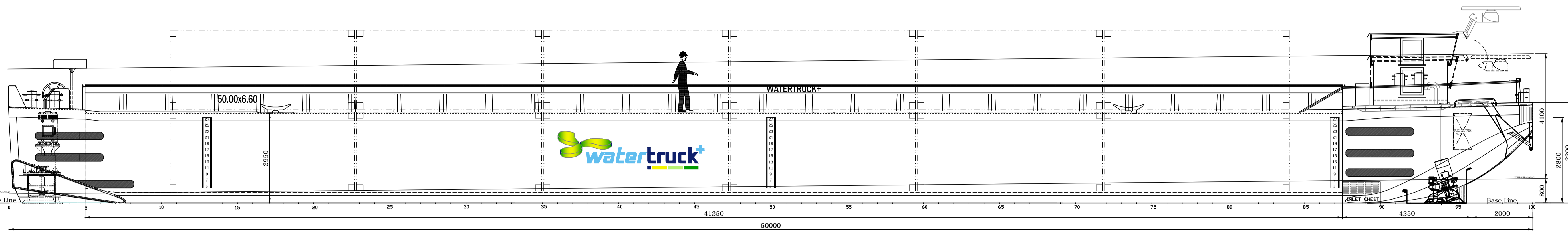
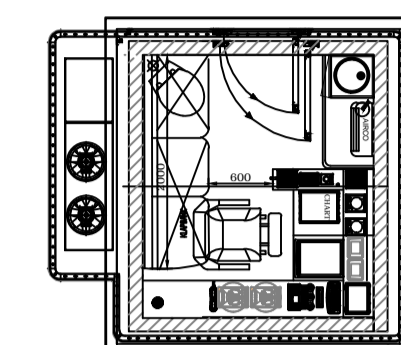


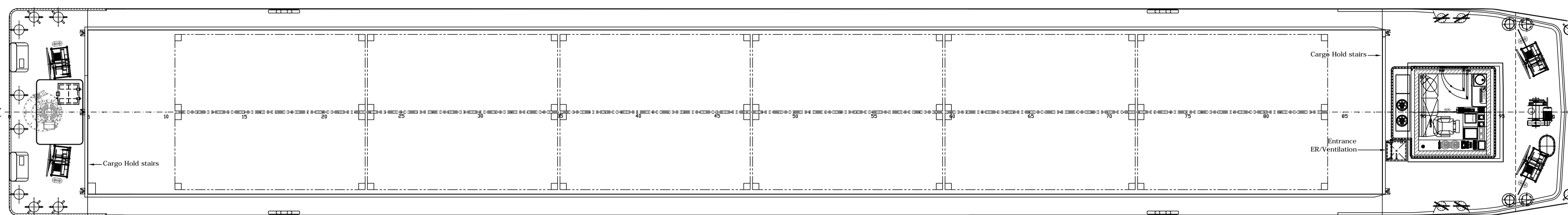
SIDE VIEW



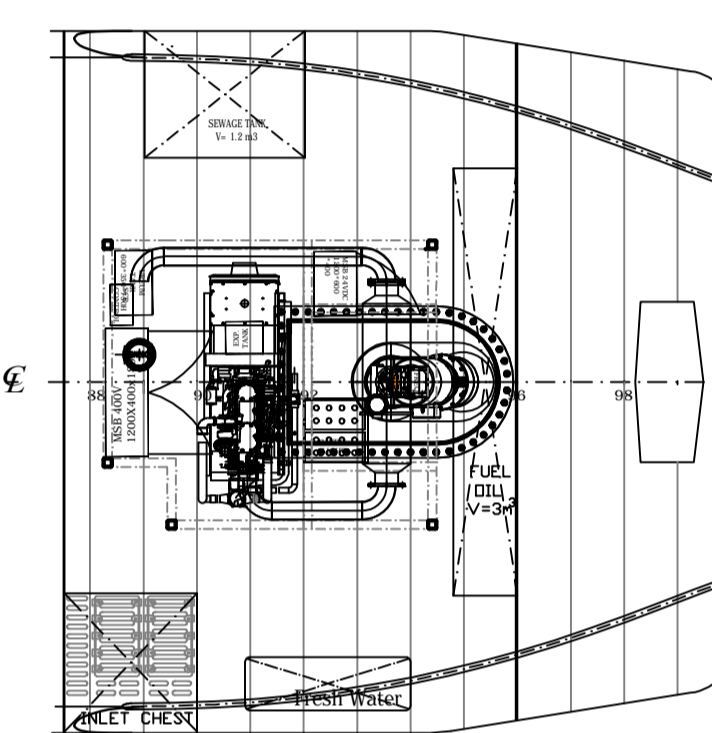
WHEELHOUSE ARRANGEMENT



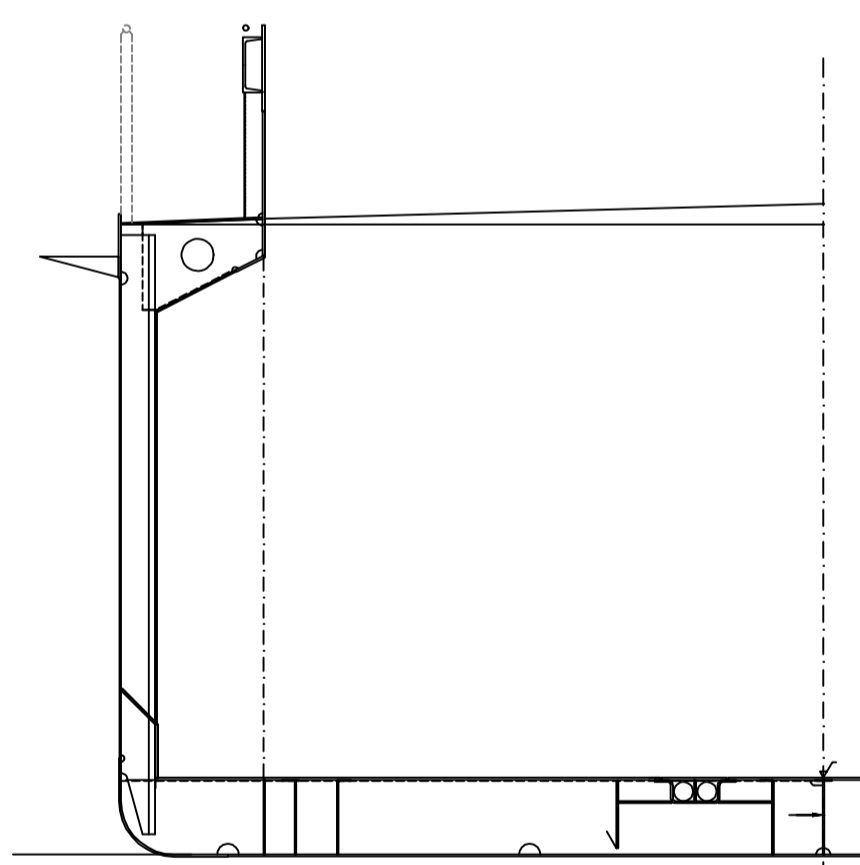
TOP VIEW



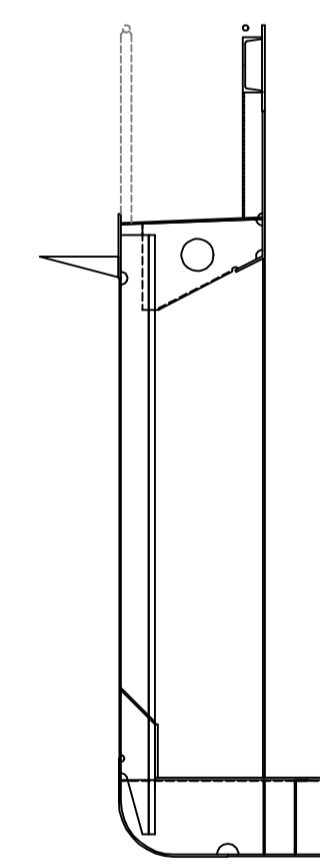
VIEW BELOW DECK FORE



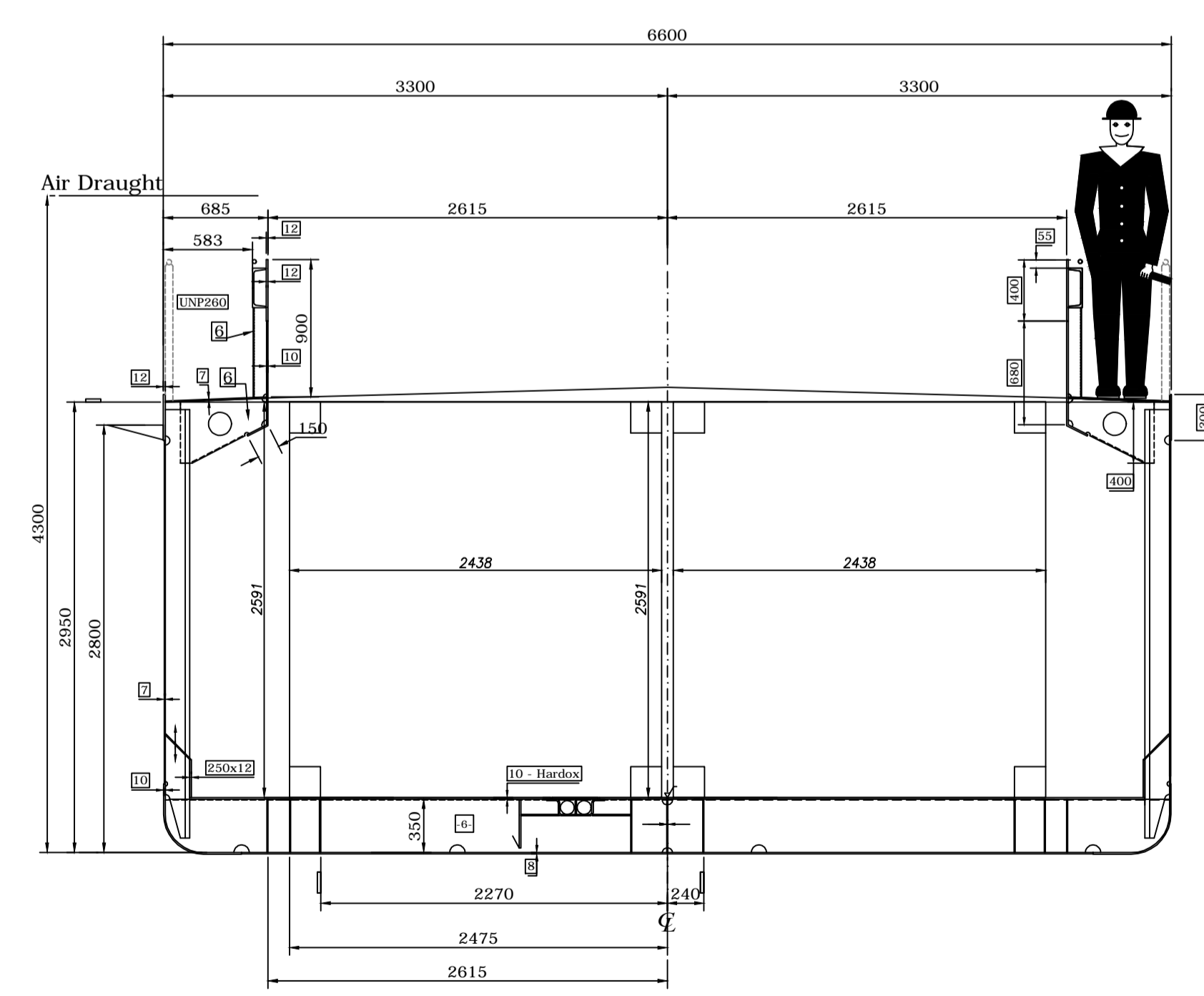
Cross Section Wet Sand (Customization) 1:25  
Air Draught



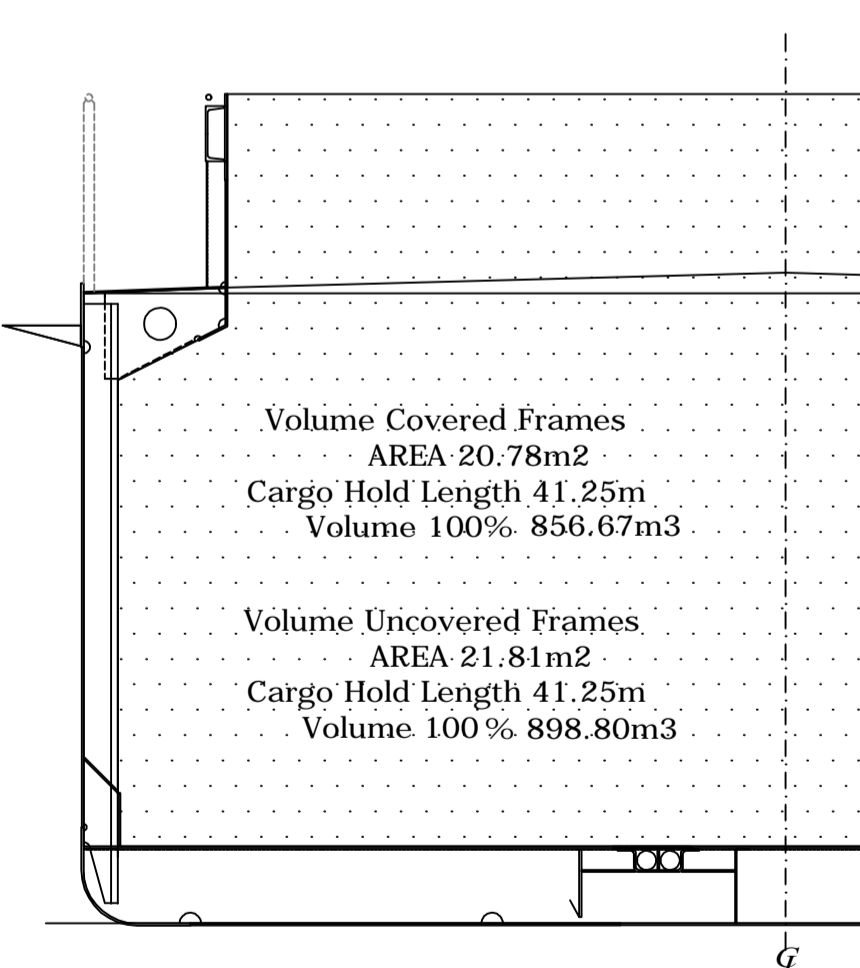
Cross Section Double walled (Customization) 1:25



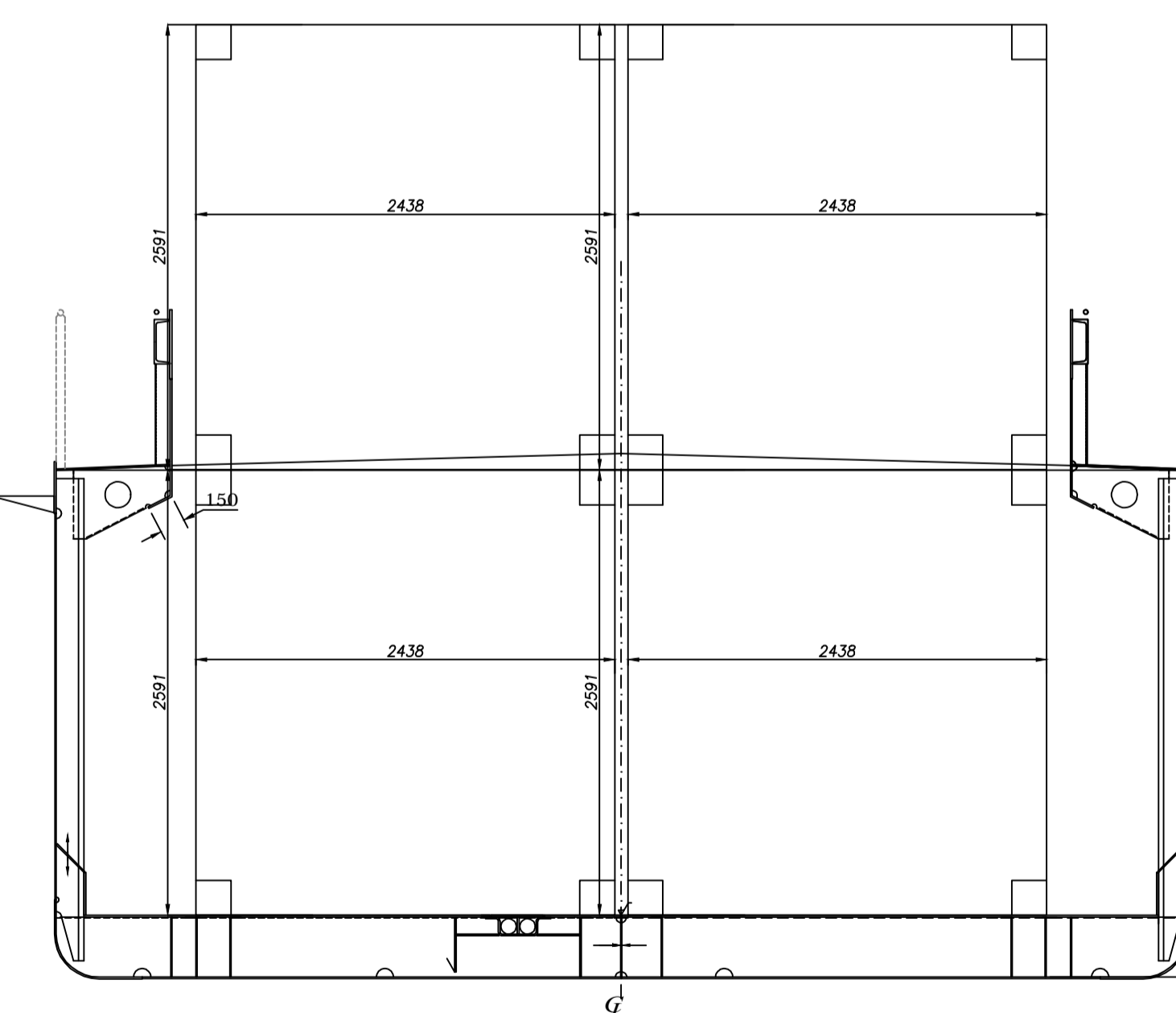
Cross Section Cargo Hold 1:25



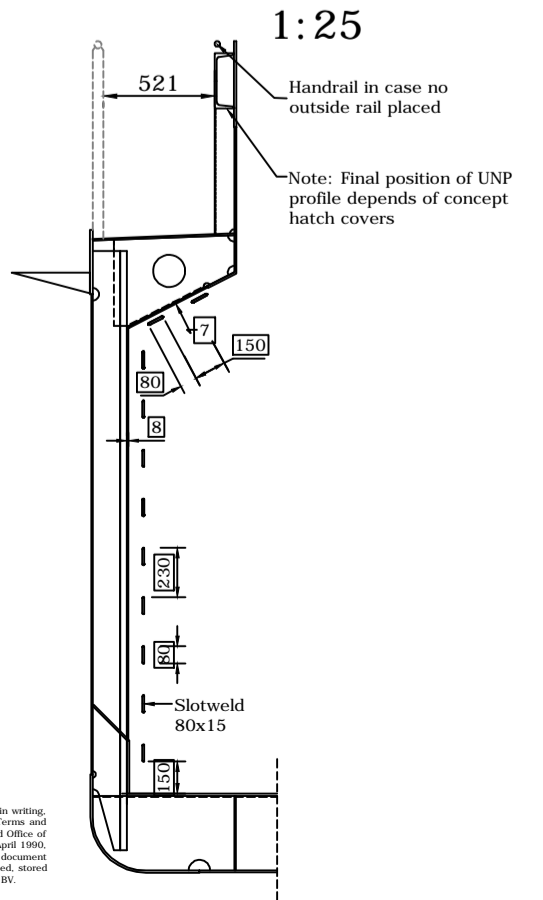
Cross Section Bulk Cargo 1:25



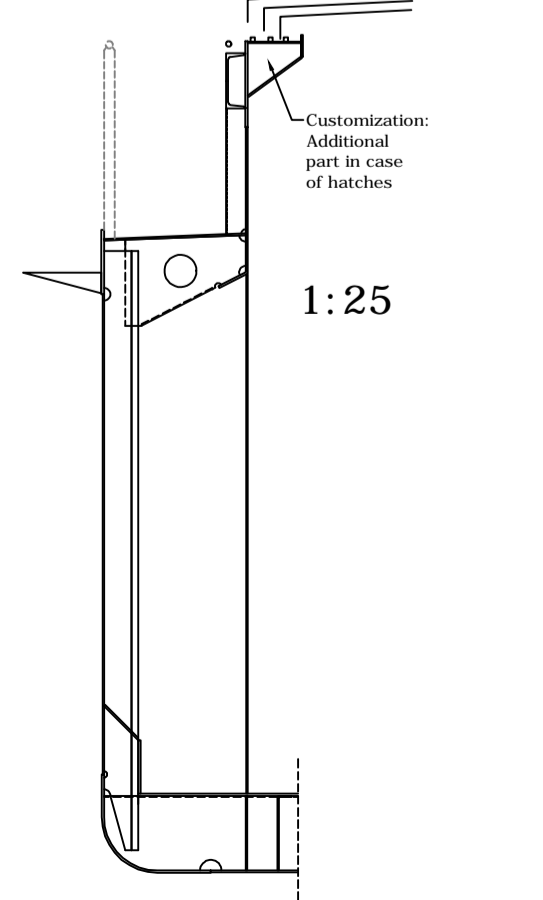
Cross section - CONTAINER 1:25



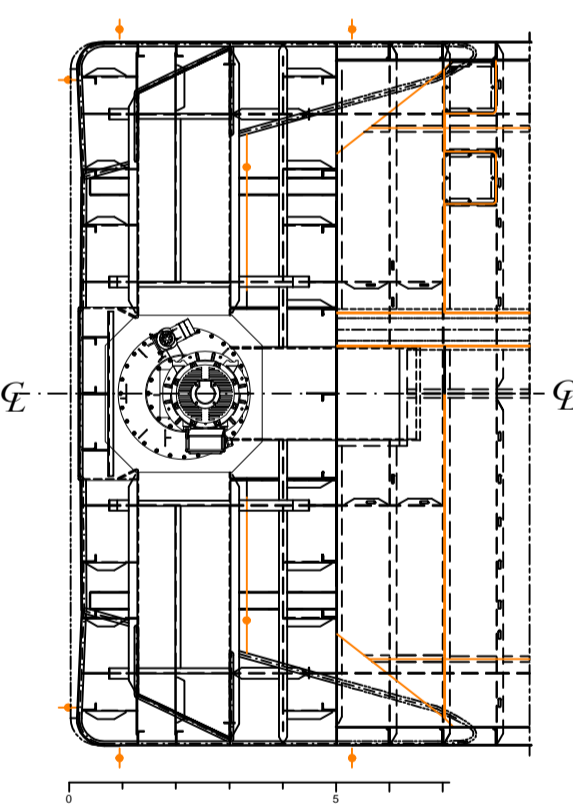
Cross Section Covered Shell Frames (Customization) 1:25



Cross Section With Hatches One of possible solutions (Customization) 1:25



VIEW BELOW DECK AFT



**MAIN DATA**

LENGTH o.a.	50.00m
BREADTH o.a.	6.60m
DEPTH	2.95m
DRAUGHT	2.80m

**watertruck+**  
WATERTRUCK bvba  
Oostdijk 110  
B-2830  
Willebroek  
info@watertruck.eu  
www.watertruckplus.eu

VER.	DATE	NAME	AFTSHIP FORM CHANGED	REVISION SUBJECT	APPROVED	DATE
A	19-10-2016	NVX				

**INEC B.V.**  
International Naval Engineering Consultants  
3110 1800 Dordrecht, The Netherlands  
Tel: +31 (0)20 6102121 Fax: +31 (0)20 6102201  
Email: info@inec.nl www.inec.nl

INLAND PUSH BARGE - CEMT II LONG  
GENERAL ARRANGEMENT

SCALE:	DRAWN BY:	DRAWING NO.:	REV.
1 : 50 1 : 25	NVX DATE DRAWN: 27.06.2016.	31261-CEMTH-L-0000	A

COPYRIGHT: This document, or any part thereof, may not be copied or modified without prior written permission of INEC B.V.